

Supporting the Sid Valley

Jack Hirst

FiPL Programme Officer

jack.hirst@eastdevon-nl.org.uk



East Devon
National
Landscape



Credit: Simon Tutty

What is FiPL?



FiPL - **F**arming in **P**rotected
Landscapes

Protected Landscapes:
National Landscapes & National Parks

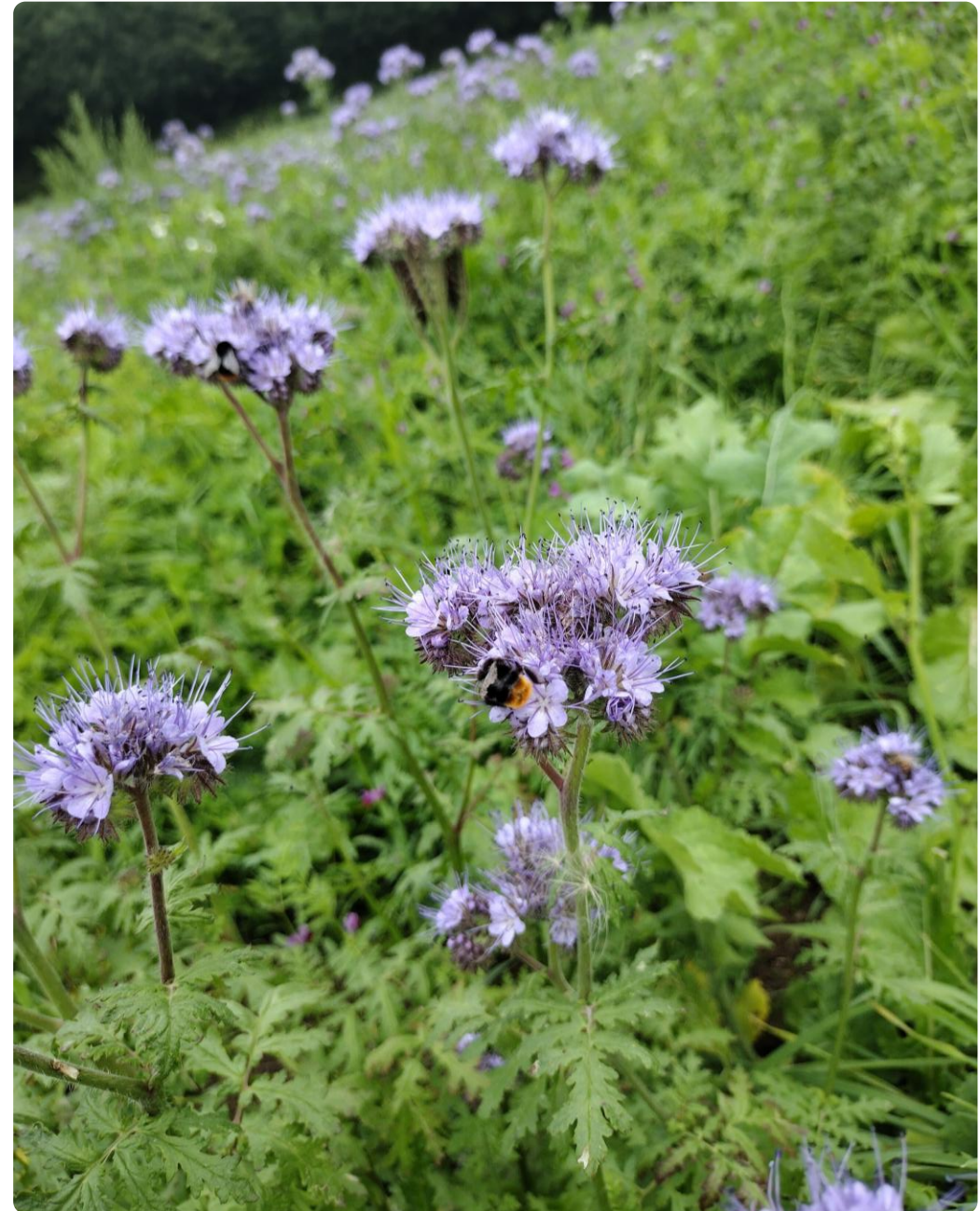


East Devon
National
Landscape



How Does FiPL Work?

- **Open to farmers and land managers** in the East Devon National Landscape
- **Locally delivered and administered** – Decisions and funding managed in East Devon
- **Projects must deliver at least one of the FiPL themes** – Nature, Climate, People, Place
- **Projects start with a conversation** – Informal chats and a site visit
- **Support throughout** – We'll help with the paperwork and make sure your project fits the funding
- **Funding available for small & large projects** – We can fund projects usually from £2000 to £50,000
- **Compliments existing schemes** – Can work alongside Countryside Stewardship and SFI

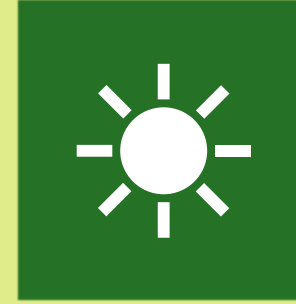


FiPL Themes



Nature

- There are greater areas of wildlife rich habitat
- There is greater connectivity between habitats
- Existing habitats are better managed for biodiversity
- Increase biodiversity



Climate

- More carbon is stored and/or sequestered
- Flood risk is reduced
- A better understanding among farmers & the public on what can store carbon and reduce emissions
- The landscape is more resilient to climate change



FiPL Themes



People

- Increase opportunities for a wide range of people to explore, enjoy & understand the landscape
- Support greater public engagement in land management, such as through volunteering

Place

- The landscapes quality & character is reinforced & enhanced
- Historic structures & features are conserved, enhanced or better interpreted
- Increase the resilience of nature-friendly sustainable farm businesses & local economies





What has FiPL done?

- **Delivered over 110 projects across EDNL**
 - Including 26 projects in the last year
- **Worked with Farmers, Landowners & Organisations**
 - Since 2021 we've worked with 65 different applicants including farmers, estates, charities and businesses
- **Delivery on the ground**
 - Last year we spent over £180,000 on projects across East Devon with an average project grant size being around £7500.





What will FiPL do?

- **FiPL Extended until 2029**
Each year will have a budget set, but the extended length will allow for multi-year projects.
- **FiPL Budget 2026-27**
 - **Capital : ~£180,000**
 - **Revenue: ~£12,000**
 - **Wildlife Rich Habitat Fund: ~£95,000**
- **Funding for practical, on-the-ground projects**
Supporting water quality, habitat, and farm resilience projects amongst many others
- **Opportunities available now**
Projects can be discussed and developed at any time



What kind of projects?

- **Surveys, feasibility studies and reports**
- Habitat creation, restoration and management
- Permissive Footpaths
- Outdoor & farm-based education
- Historic feature conservation

Sand House River and Floodplain Restoration site-based geomorphology assessment

Julian Payne,



What kind of projects?

- Surveys, feasibility studies and reports
- **Habitat creation, restoration and management**
- Permissive Footpaths
- Outdoor & farm-based education
- Historic feature conservation



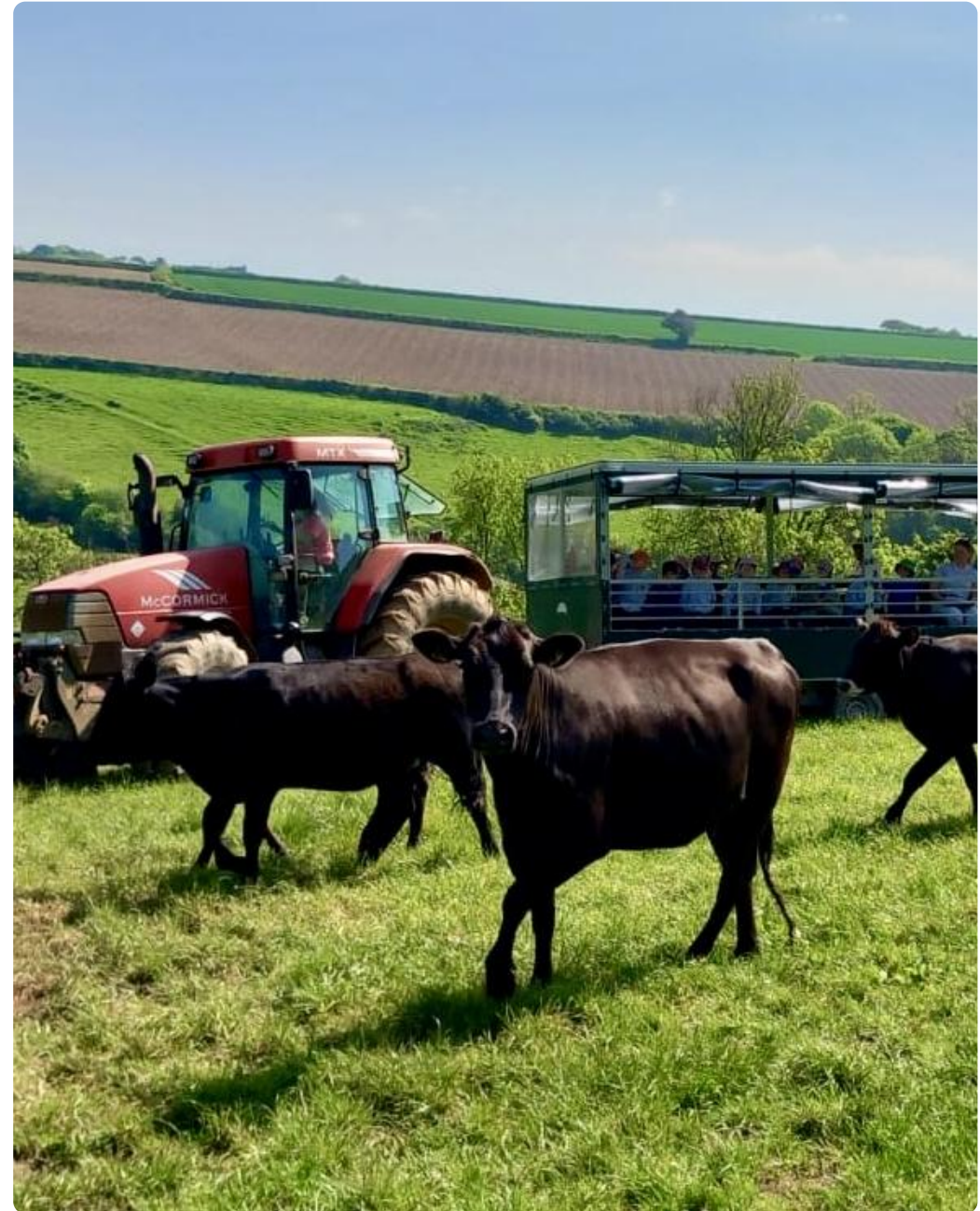
What kind of projects?

- Surveys, feasibility studies and reports
- Habitat creation, restoration and management
- **Permissive Footpaths**
- Outdoor & farm-based education
- Historic feature conservation



What kind of projects?

- Surveys, feasibility studies and reports
- Habitat creation, restoration and management
- Permissive Footpaths
- **Outdoor & farm-based education**
- Historic feature conservation



What kind of projects?

- Surveys, feasibility studies and reports
- Habitat creation, restoration and management
- Permissive Footpaths
- Outdoor & farm-based education
- **Historic feature conservation**





Other Funds

Access for All

- **Funding to improve access for all users:**
 - Supports projects that make landscapes more inclusive
- **Capital grants for practical infrastructure:**
 - Funds one-off improvements like:
 - Accessible paths & gates
 - Signage
 - Mobility equipment
 - Digital access works
- **Flexible, fully fundable projects benefiting the area:**
 - Grants typically £2k–£20k



Other Funds

East Devon National Landscape Fund

- **Supports community led environmental and landscape projects:**
 - Focus on conserving, enhancing & celebrating the East Devon landscape
 - Projects cover:
 - Nature recovery
 - Heritage
 - Community wellbeing
- **Small grants with match funding required:**
 - Up to £4,000 per project
 - Funds up to 60% of total project costs

Applications open from April 1st to May 10th 2026



Find us Talk to us

eastdevon-nl.org.uk

jack.hirst@eastdevon-nl.org.uk

Tel: 01404 642 030

WhatsApp: 07552 634994



